



Model:

**1442**

Product Type:

**13" NUT/THREAD SETTING HAND RIVETER KIT WITH 3PC METRIC AND 3PC SAE MANDREL/NOSEPIECE SETS AND RIVET NUT ASSORTMENT**



## WARNING



Study, understand and follow all instructions provided with this product. Read these instructions carefully before installing, operating, servicing or repairing this tool. Keep these instructions in a safe accessible place.

### INTENDED USE OF THE TOOL

This tool is intended to be used to install metric M5, M6, M8 and SAE 10-24, 1/4-20, 5/16-18 rivet nuts.



## WARNING



### Caution: To help prevent personal injury

- Normal use of this product is likely to expose the user to dust and/or microscopic particles containing chemicals known to the State of California to cause cancer, birth defects or other reproductive harm. Always wear appropriate safety equipment and clothing when using this product. Study, understand and follow all instructions provided with this product. Failure to read and follow all warnings and operating instructions may result in damages and serious injury or death.
- Always wear ANSI approved goggles when using this product. (Users and Bystanders).
- Never use this tool for any application other than for which it was designed.
- Only use accessories designed for this tool.
- Never alter or modify this tool in any way.
- Improper operation and/or maintenance of the tool, modification of the tool, or use of the tool with accessories not designed for it could result in serious injury or death.
- Always select the correct accessories of the correct size and design for the job that you are attempting to perform.
- Always work in a clean, safe, well-lit, organized and adequately equipped area.
- Do not begin repairs without assurance that vehicle is in secure position, and will not move during repair.

### 13" NUT/THREAD SETTING HAND RIVETER KIT WITH 3PC METRIC AND 3PC SAE MANDREL/NOSEPIECE SETS AND RIVET NUT ASSORTMENT



MADE IN CHINA



**Astro Pneumatic  
Tool Company**

[www.astrotools.com](http://www.astrotools.com)

### 1 YEAR LIMITED WARRANTY

- Astro Pneumatic Tool Co. warrants our products to the original user against defective material or workmanship for a period of 1 year (except where noted on our price schedule) from the date of 1st use. Astro reserves the right to determine whether the product failed because of defective material, workmanship or other causes and to charge back for missing parts. Astro Pneumatic Tool Co., at its discretion, will repair products covered under this warranty free of charge. The distributor should direct the original user to return the product (with the exceptions listed below) with the distributor's name, address, adequate proof of date of purchase or a copy of warranty card, and a short note explaining the problem. Failures caused by accident, alteration, or misuse are not covered by this warranty.
- If one part of this product fails, please do not return the entire product. Astro will replace free of charge component parts of this product that fail within 1 year of first use by the original user. Items included in this category include but are not limited to kits, hand tool kits and any other product where there are multiple items or components that make up the unit. Please contact the phone number below in order to obtain the replacement components covered under warranty.
- Astro Pneumatic Tool Co. or its authorized service representatives must perform all warranty repairs. Any repair to the product by unauthorized service representatives voids this warranty. The rights under this warranty are limited to the original user and may not be transferred to subsequent owners.
- This warranty is in lieu of all other warranties, expressed or implied, including warranties of merchantability and fitness for a particular purpose. Some states do not allow the exclusion of limitations of incidental or consequential damages so the above limitations may not apply to you.



## WARNING



### Unpacking

When unpacking, check the parts diagram and part number listing on page 3 to make sure all parts are included. If any parts are missing or damaged, please call your distributor.

### PRODUCT INFORMATION:

- Patented structure increases power and reduces shock
- Shorter handle with double compound hinges that maximize leverage
- Includes 13" (330mm) Hand Nut/Thread Setting Riveter
- 6 interchangeable mandrel/nosepiece sets in Metric M5-0.8, M6-1.0, & M8-1.25 and in SAE 10-24, 1/4-20, & 5/16-18
- Includes 10 pieces of each of the following rivet nuts: M5-0.8, M6-1.0, M8-1.25, 10-24, 1/4-20, and 5/16-18
- Versatile and powerful hand nut/thread setting riveter, takes the hard work out of setting rivet nuts
- Ideal for working in hard-to-reach area
- Ergonomic grip for easy operation
- Includes necessary wrenches for quick change of mandrel/nosepiece sets allowing immediate operation of riveter with all sizes

**DO NOT DISCARD – GIVE TO USER**



Model: **1442**

Product Type:  
**13" NUT/THREAD SETTING HAND RIVETER KIT WITH 3PC METRIC AND 3PC SAE MANDREL/NOSEPIECE SETS AND RIVET NUT ASSORTMENT**



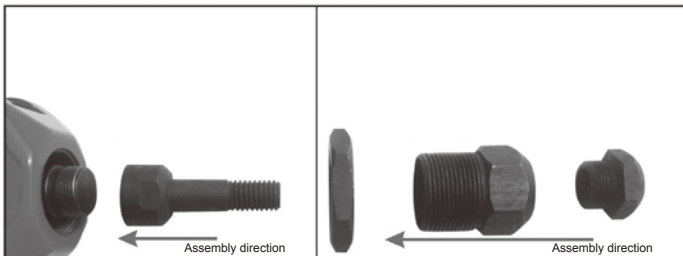
## WARNING



Always wear ANSI approved safety goggles when using this product (Users and Bystanders). Failure to read and follow all warnings and operating instructions may result in damages and serious injuries or death.

## OPERATING INSTRUCTIONS

1. Choose the rivet nut size to be installed.
2. Install the correct size mandrel/nosepiece for the rivet nut to be installed. See photos and instructions for changing the mandrel/nosepiece and adjustment.
3. Drill a hole in the work product the same size or slightly larger than the outside diameter of the rivet nut to be installed.
4. To install the rivet nut, open the handles outward as far as possible and thread the rivet nut clockwise onto the mandrel until reaching the nosepiece.
5. Insert the rivet nut fastened to the riveter into the pre-drilled hole until flush with the work product, and pull handles inward to secure the rivet nut into the hole. If the rivet nut is loose in the hole, open the handles outward, turn #13 knob clockwise, and pull handles inward until the rivet nut is secure in the hole. Repeat as necessary until the rivet nut is secure in the hole. See adjustment instructions if necessary.
6. Turn the #13 knob counterclockwise until the mandrel is removed from the rivet nut. The rivet nut installation is complete if the rivet nut is secure from movement in the hole.



## CHANGING MANDREL/NOSEPIECE INSTRUCTIONS

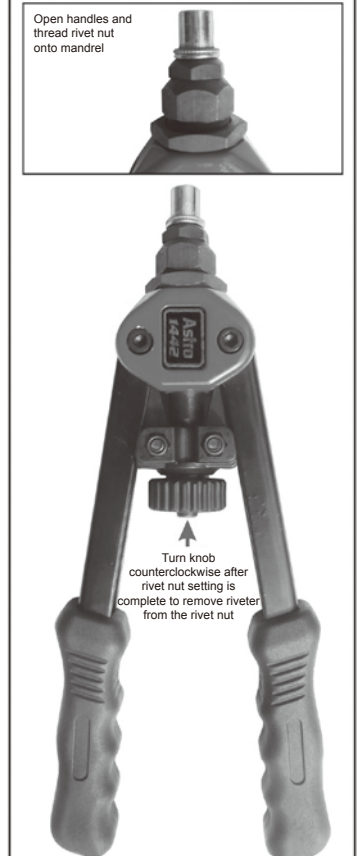
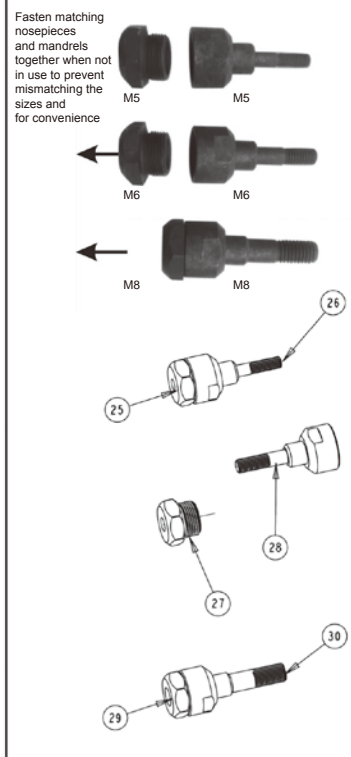
1. Remove and install the mandrel/nosepiece sets with the wrenches provided in the riveter kit. Always keep the matched mandrel/nosepiece sets together. The mandrel can be fastened to the matching nosepiece after removing from the riveter for convenience and to prevent mismatching.
2. Remove nosepiece from #18 outer cylinder by turning counterclockwise.
3. Loosen #17 locknut and remove #18 outer cylinder from #16 main body by turning counterclockwise.
4. Remove mandrel from #14 main shaft by turning counterclockwise, while holding main shaft with wrench.
5. Choose the correct mandrel/nosepiece to be installed.
6. Install mandrel to #14 main shaft by turning clockwise and tighten securely, while holding main shaft with wrench.
7. Install #18 outer cylinder with #17 locknut to #16 main body by turning clockwise, adjust to proper depth, and tighten #17 locknut securely. See adjustment instructions if necessary.
8. Install nosepiece to #18 outer cylinder and tighten securely.

## ADJUSTMENT INSTRUCTIONS

1. Proper adjustment of the riveter is necessary for efficient and easy operation.
2. The adjustment of the riveter will vary, depending on the size and type of rivet nut being used and the hole size.
3. Adjust the riveter by opening the handles outward as far as possible and turning the #18 outer cylinder clockwise to increase the number of threads on the mandrel protruding beyond the nosepiece for larger rivet nuts, and by turning the #18 outer cylinder counterclockwise for smaller rivet nuts. Fine adjustment can be made by turning the rivet nut on the mandrel to position the rivet nut closer or further away from the nosepiece, as long as the mandrel is threaded all the way through the rivet nut.
4. Always assure that the mandrel is threaded into all threads of the rivet nut to prevent damage to the threads on the mandrel and/or the rivet nut.
5. If the handles are extended too far outward to provide enough leverage to pull the handles inward to set the rivet nut, turn the #18 outer cylinder clockwise or turn the rivet nut counterclockwise slightly to change the handle angle to provide the proper leverage.



Riveter properly prepared for setting rivet nuts





**Astro Pneumatic  
Tool Company**

372 Old US Highway 52 South  
Mount Airy, NC 27030

Model:

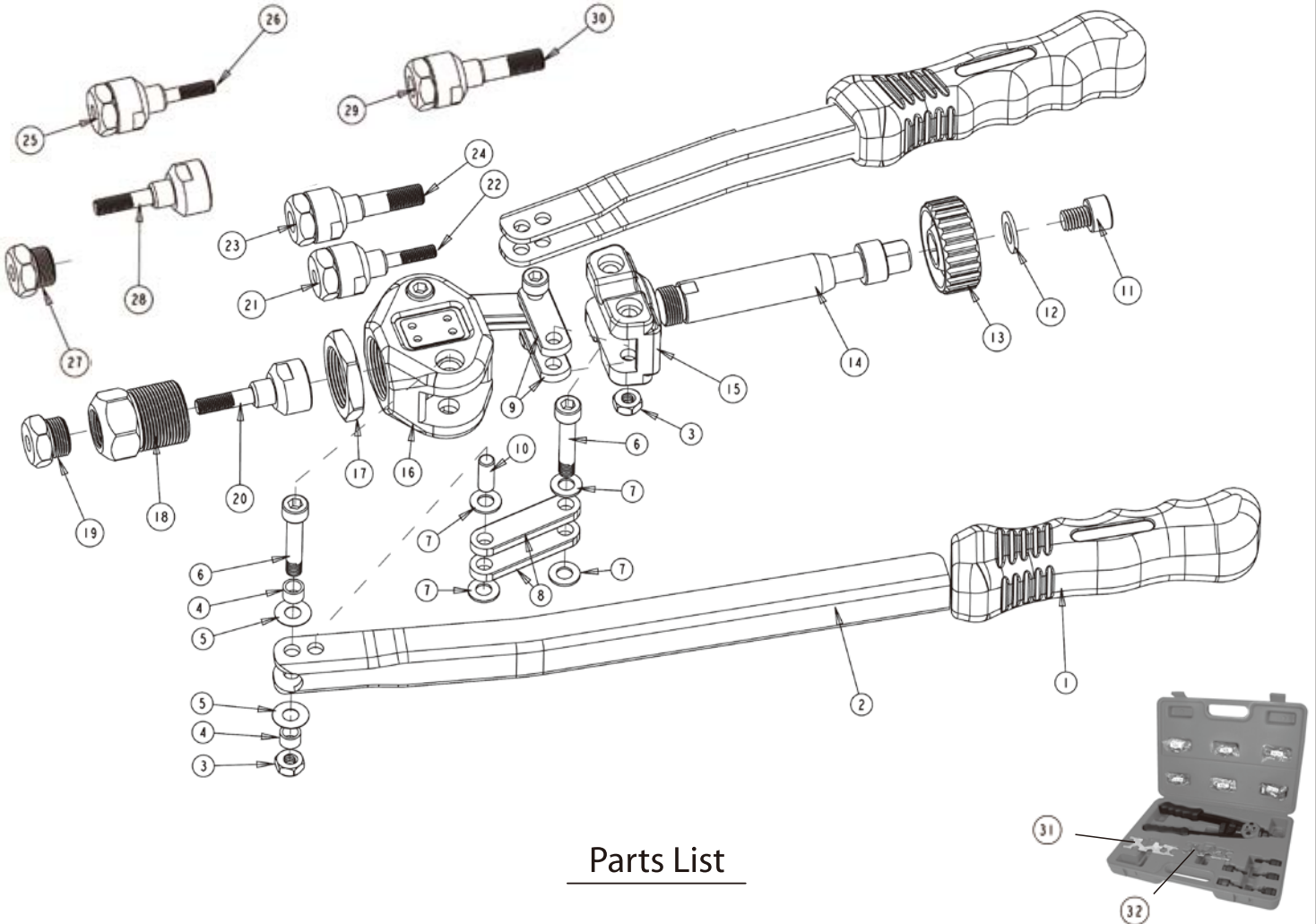
**1442**

Product Type:

**13" NUT/THREAD SETTING HAND RIVETER KIT WITH  
3PC METRIC AND 3PC SAE MANDREL/NOSEPIECE  
SETS AND RIVET NUT ASSORTMENT**

**PARTS BREAKDOWN**

Call 1.800.221.9705 for questions concerning performance of the product or other inquiries.



**Parts List**

Index No.	Part No.	Description	Qty
1	1442-01	Grip	2
2	1442-02	Handle	2
3	1442-03	Locknut	4
4	1442-04	Bushing	4
5	1442-05	Metal Washer	4
6	1442-06	Screw	4
7	1442-07	Metal Washer	8
8	1442-08	Connecting Bar	4
9	1442-09	Connecting Bar	2
10	1442-10	Bushing	2
11	1442-11	Screw	1
12	1442-12	Metal Washer	1
13	1442-13	Knob	1
14	1442-14	Main Shaft	1
15	1442-15	Main Shaft Drive	1
16	1442-16	Main Body	1

Index No.	Part No.	Description	Qty
17	1442-17	Lock Nut	1
18	1442-18	Outer Cylinder	1
19	1442-19	Nosepiece - 6mm-1.0	1
20	1442-20	Mandrel - 6mm-1.0	1
21	1442-21	Nosepiece - 5mm-0.8	1
22	1442-22	Mandrel - 5mm-0.8	1
23	1442-23	Nosepiece - 8mm-1.25	1
24	1442-24	Mandrel - 8mm-1.25	1
25	1442-25	Nosepiece - 10-24	1
26	1442-26	Mandrel - 10-24	1
27	1442-27	Nosepiece - 1/4-20	1
28	1442-28	Mandrel - 1/4-20	1
29	1442-29	Nosepiece - 5/16-18	1
30	1442-30	Mandrel - 5/16-18	1
31	1442-31	Wrench	1
32	1442-32	Wrench	1